



THE CLUB EDITION PROGRAM | 2011



he program that not only continues your club's legacy — but offers you a new line of merchandise with no inventory or set-up cost. Great for members, gifts and club promotions.

With the *Golframes Club Edition Program*, existing photography, archive images and golf course plans are brought to life and offered to members, guests and collectors of golf memorabilia. Images are expertly reproduced as limited edition prints, framed or unframed.

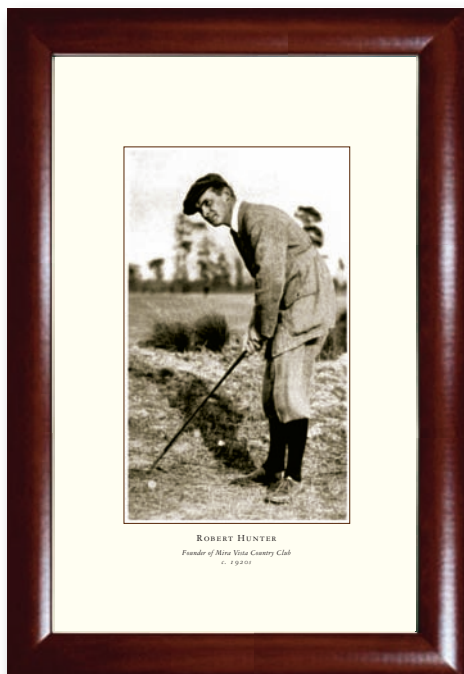
Your club offers web-direct sales through the *www.golframes.com* website and may also inventory and display framed prints in your retail shop. Members and guests may receive special discounts at your discretion.

#### COURSE PHOTOGRAPHY

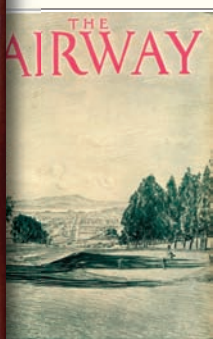


- No set-up costs & no inventory costs — unless you choose to inventory samples and product at wholesale pricing
- You determine your own retail price for web sales
- All or part of your club commission may be extended to members through special discount codes
- Link directly from your website to your limited editions
- Club commissions may be redeemed quarterly or applied to wholesale orders to display in your retail shop
- No set-up charges when you offer web direct sales channels
- Edition numbering included in costs
- Signed editions may be arranged

*The Club Edition Program features executive sized (19.5 x 13.5 in.) framed prints that fit in carry-on luggage and are easily shipped with non-breakable, styrene glass. Canadian Walnut finish eco wood frames are standard.*



#### CLUB HISTORIC IMAGES



#### ORIGINAL PLANS

*With two ways to participate — choose one or both...*

1 CLUB COMMISSION SCHEDULE <i>Web-direct Sales (www.golframes.com) with links from your website</i>		Retail Web Price (Determined by Club)		
		A	B	C
<b>Limited Edition Framed Print</b> <i>Executive sized 19.5 x 13.5 in. (overall)                      including Canadian Walnut finish frame with                      styrene glass and limited edition numbering</i>	<i>Retail Price:</i>	\$ 79.00	\$ 89.00	\$ 99.00
	<i>Club Commission:<sup>1</sup></i>	20% (\$15.80 ea)	30% (\$26.70 ea)	40% (\$39.60 ea)
	<i>Set-up Costs:</i>	- 0 -	- 0 -	- 0 -
<b>Limited Edition Print (unframed)</b> <i>Print size 17 x 11 in. with limited edition numbering</i>	<i>Retail Price:</i>	\$ 29.00	\$ 39.00	\$ 49.00
	<i>Club Commission:<sup>1</sup></i>	20% (\$5.80 ea)	30% (\$8.01 ea)	40% (\$19.60 ea)
	<i>Set-up Costs:</i>	- 0 -	- 0 -	- 0 -
2 WHOLESALE PRICING <i>For inventory you want to have on hand</i>		1-9	10-19	20+
		<b>Limited Edition Framed Print</b> <i>(Same features as above)</i>	<i>Wholesale Cost:</i>	{ All wholesale pricing is subject to account approval }
<b>Limited Edition Print (unframed)</b> <i>(Same features as above)</i>	<i>Wholesale Cost:</i>	{ All wholesale pricing is subject to account approval }		

<sup>1</sup>Club Commission is calculated on the Retail Price selected by the club. Club commissions are accounted quarterly and may be redeemed less a 10% redemption fee, or may be applied in full to wholesale orders for any Golframes prints or framed prints.

Club commissions or portions thereof extended to members or others by the club ("discounts") will be deducted from quarterly club commissions.

Limited edition quantity is 100 minimum and subject to terms and conditions of the Club Edition Program Agreement.

No set-up costs — all scanning and formatting is included unless images require large format scanning, special shipping or rush charges.

Shipping costs with Web-direct Sales are paid by the customer in addition to the retail price(s) selected.

Shipping costs for Wholesale Orders are determined by your preferred shipping method and are in addition to the wholesale unit prices shown.

Set-up costs at \$200.00 per edition unless the edition is part of the Web Direct Program, in which case set-up charges are no-charge.

Wholesale pricing for other Golframes editions are subject to separate pricing schedules.

Terms for all wholesale orders are C.O.D. unless with approved credit.

Refer to Terms & Conditions Agreement for full program information.

TERMS & CONDITIONS AGREEMENT | *The Golframes Club Edition Program 2011*

Golframes agrees to prepare one or more "Limited Edition Prints" for the Club listed below subject to the following terms and conditions:

Name of Club ("Club"): \_\_\_\_\_  
 Contact/Authorized Representative: \_\_\_\_\_  
 Telephone: \_\_\_\_\_ email: \_\_\_\_\_  
 Street Address: \_\_\_\_\_  
 City: \_\_\_\_\_ State: \_\_\_\_\_ Postal Code: \_\_\_\_\_

The following "Limited Edition Prints" are part of this program:

<i>Print Title</i>	<i>Web Direct Retail Price (select one)</i>			<i>Limited Edition Qty.</i>	
1. _____	A <input type="checkbox"/>	B <input type="checkbox"/>	C <input type="checkbox"/>	_____	
2. _____	A <input type="checkbox"/>	B <input type="checkbox"/>	C <input type="checkbox"/>	_____	
3. _____	A <input type="checkbox"/>	B <input type="checkbox"/>	C <input type="checkbox"/>	_____	
	<i>19.5 x 13.5 in. Framed:</i>	\$ 79.00	\$ 89.00	\$ 99.00	<i>(Total must be 100 min.)</i>
	<i>17 x 11 in. Print Only:</i>	29.00	39.00	49.00	

- A. The "Limited Edition Print" quantity shall be 100 or greater.
- B. If prints are not selected to be a part of Web Direct Sales a \$200 set-up fee shall apply to each print edition. Unless special scanning or other requirements are necessary to prepare a "Limited Edition Print," there is no-charge for set-up of editions that are selected to be a part of the Web-direct Sales Program. Prints may be a part of both programs: Web Direct Sales and Wholesale Orders. Wholesale pricing and terms shall be that in effect at the date entered below and are subject to the terms herein.
- C. Commission amounts vary depending on the Web Direct Retail Price selected by the Club for each "Limited Edition Print." The Web Direct Sales Price may be changed by the Club up to two times per calendar year to A, B or C. Commission amounts are collected by Golframes for each unit sold via the www.golframes.com website. Commission amounts are held by Golframes and available to the Club on a quarterly basis in the following two options: (i) as a paid commission, less 10% of the amount for handling; and/or (ii) as a credit for any purchases at the Wholesale Price Schedule for any available Golframes merchandise. Commission amounts held for one year or longer may be disbursed by Golframes at its sole discretion upon ten (10) days notice to the Club. Commission amounts to be disbursed shall be made within thirty (30) days of the end of any quarterly period and subject to the handling fee.
- D. A quantity of prints of any edition may be restricted by the Club upon advance payment of the Wholesale Cost for the quantity of prints to be restricted pursuant to the current Wholesale Price Schedule for Un-framed Prints in effect at the time of the restriction. Restricted prints may be inventoried by the Club or held by Golframes at the club's discretion. The purpose of restricting an edition by this method is to ensure prints are available to the club, its members and others to be determined by the Club. When a quantity of restricted prints is held by Golframes for any edition, all non-restricted prints of the same edition may be sold by Golframes. At such time as Golframes is holding only restricted prints for any edition, Golframes will notify the Club at which time restricted prints may be converted to non-restricted status or remain held at the club's discretion. The Wholesale price paid by the Club for each restricted print later sold by Golframes, whether at Wholesale Pricing or via the Web-direct basis, will be credited back to the Club in addition to any Club Commission to be realized. (See "G" below for handling of any unsold restricted prints.)
- E. The term "Limited Edition Print" shall mean an edition of a print as listed above that shall be reproduced by Golframes on a demand basis and subject to the limitations of edition quantity shown above. Golframes and the Club agree not to produce, offer for sale or distribute additional prints of any edition beyond the stated quantity listed above unless material changes to the edition have been made and approved by both parties to form a new edition subject to current pricing, agreements and terms.
- F. The Club shall retain ownership of all images in its control subject to the terms included here. The specific design of all "Limited Edition Prints" prepared by Golframes shall be retained by Golframes, but shall not be produced or offered for sale by either party except as agreed to here or by separate agreement(s). Golframes does not reserve the right to produce or offer for sale any copies of any "Limited Edition Print" listed above except as provided herein or through other rights acquisition(s).
- G. In the event that Golframes elects to discontinue any "Limited Edition Print" or all or part of the Club Edition Program the following shall apply: (i) restricted unsold prints shall be shipped at the Club's cost to the Club; and (ii) unrestricted prints which are unsold shall be offered to the Club at the current Wholesale Price Schedule. In the event the Club elects not to purchase unsold and unrestricted prints, the Club shall provide notice of such refusal to Golframes within ten (10) days of any discontinuation notice made by Golframes after which, whether or not the Club has provided notice of refusal, Golframes shall destroy any unsold prints within its inventory subject to (ii) above and shall terminate all sales of that particular "Limited Edition Print."
- H. Golframes reserves the right to adjust pricing and product features for any and all programs, including Web Direct and Wholesale Pricing.

By authorizing Golframes to produce these editions I warrant that the club listed above possesses the rights to reproduce the "Limited Edition Prints" listed, inclusive of any and all copyright, usage and other rights. Further, that the Club will be responsible for any and all usage fees, license fees or other fees to use images and designs, if required, provided to Golframes for the purposes defined above.

Authorized Signature ("Club"): \_\_\_\_\_  
 Title: \_\_\_\_\_ Date: \_\_\_\_\_  
 Golframes Approval: \_\_\_\_\_ Date: \_\_\_\_\_